



Triangle TRS02

Product Information



Product Description

Application

Triangle TRS02 is designed for trucks as Steer pattern, and for busses as All Position pattern, it has a functional appearance and excellent cornering and handling performances.

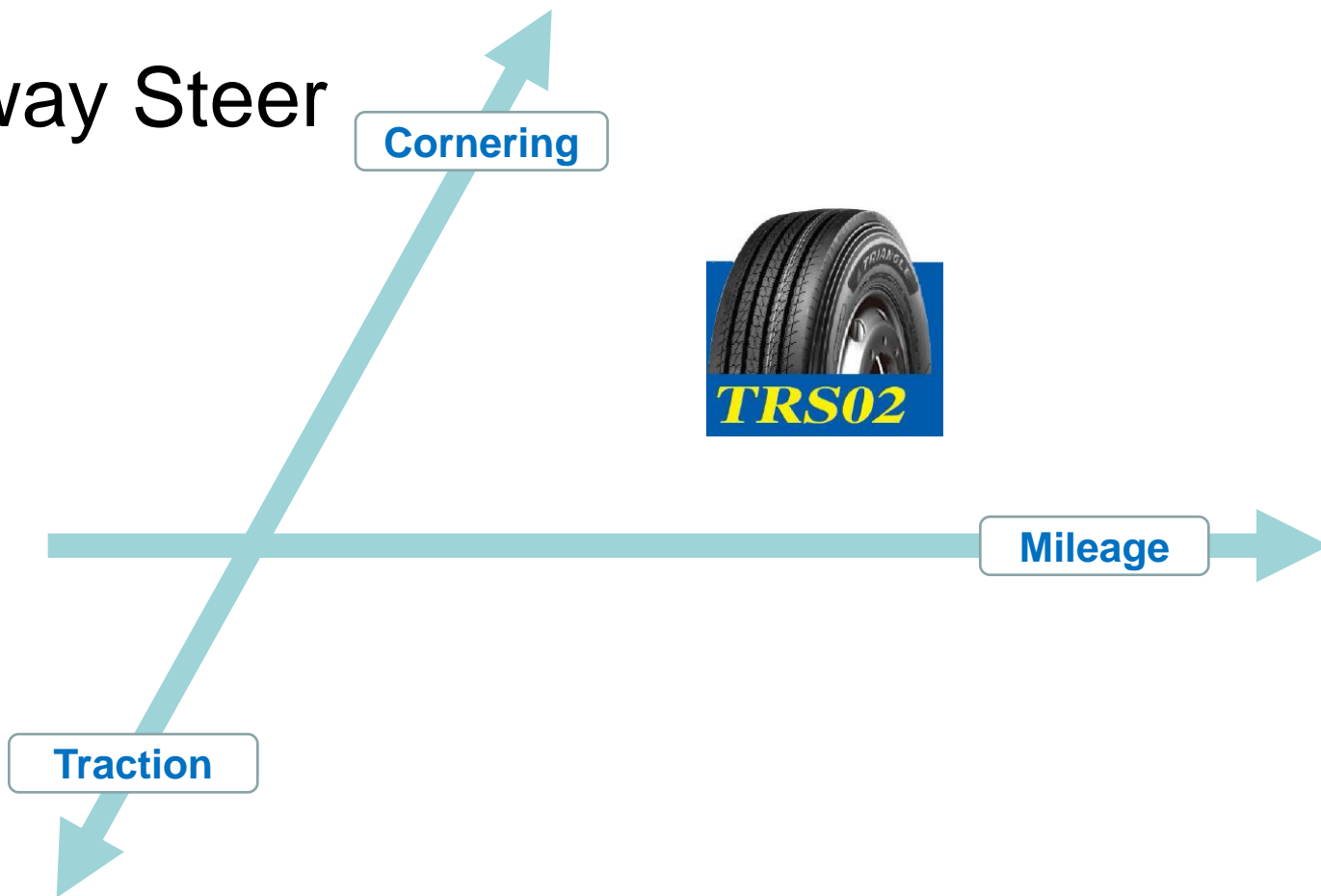
Optimized carcass, unique pattern design and low rolling resistance tread compound with a long mileage providing lower rolling resistance and reduced fuel consumption.

This regoovable tire is suitable for long distance fleet application in Europe and Asia-Pacific Regions



Product Positioning

EU Highway Steer
Patterns



Truck Type, Wheel Position & Road Condition.

Truck Type	Standard Truck	Semi-trailer	Coach /Bus	
Wheel Position: Steer / All Position				
Road Condition: 100% Paved Road	Highway		National Road	

Product Features & Benefits.

Pattern Design

Feature
*Optimized rib
stiffness distribution*

Benefit
*Improved resistance
to cornering wear and
optimum traction*

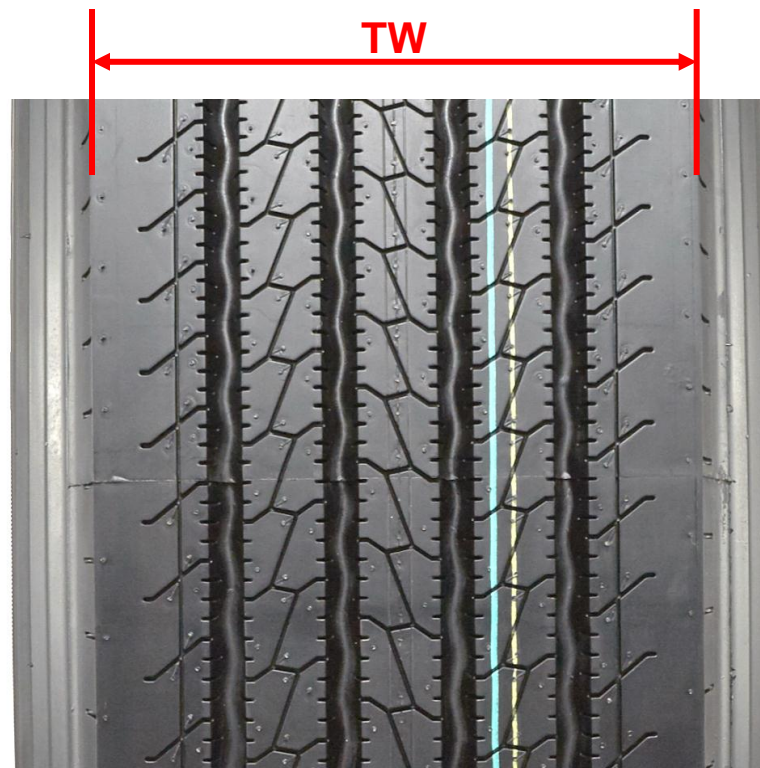


Product Features & Benefits.

Pattern Design

Feature
*Wide crown area and
wear-resistant
compound*

Benefit
Long mileage



Product Features & Benefits.

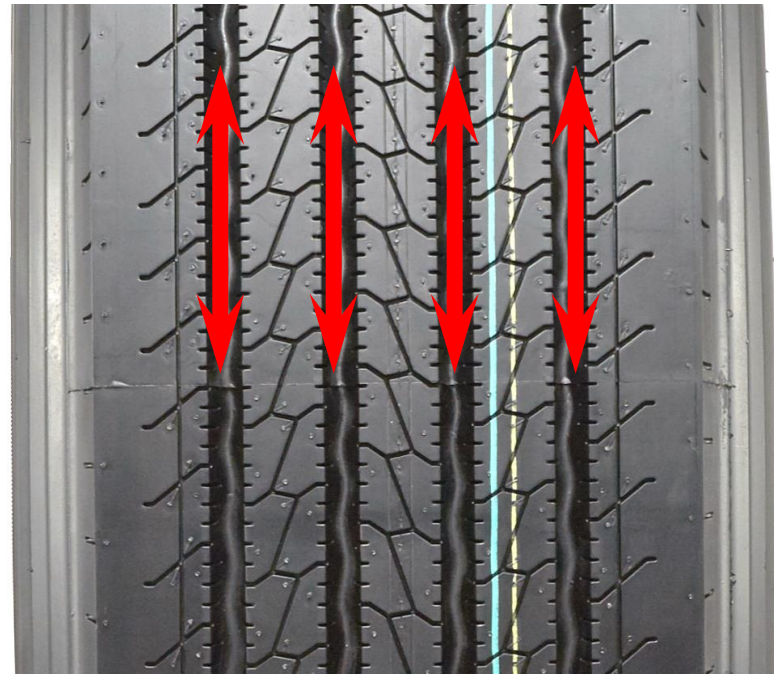
Pattern Design

Feature

*4 Wide
circumferential
grooves and high
blading density*

Benefit

*Good steering /
tracking performance
and great wet grip*

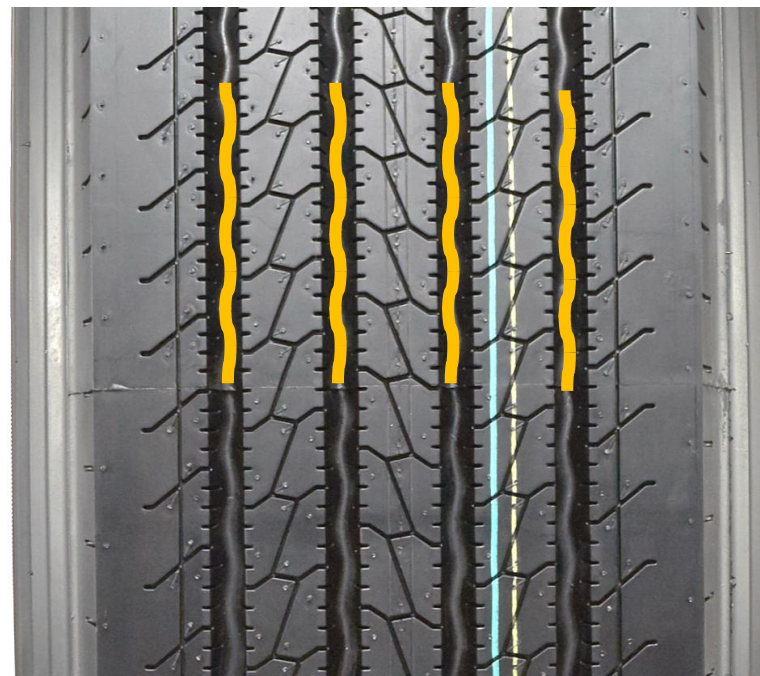


Product Features & Benefits.

Pattern Design

Feature
*variable angle groove
wall design*

Benefit
*Effective water
evacuation channels,
self clean performance
and crack resistance*



Product Features & Benefits.

Construction

Feature

*Low rolling resistance
tread compound and
hard base*

Benefit

*Reduced tire rolling
resistance for reduced
fuel consumption*



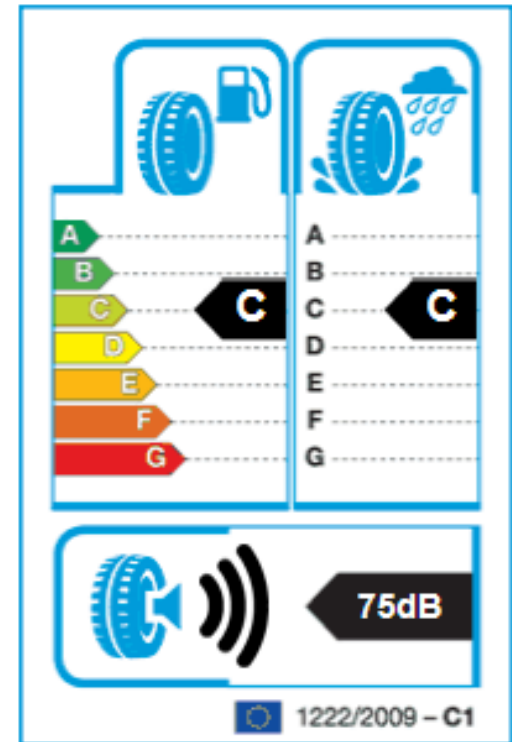
Line-up & Technical Info.

Size	PR	Loading Index		Speed Rating	Tread Depth(mm)	Rim Width	Alternative Rim	New Tire Inflated Dimensions(mm)		Max Load(Kg)		Pressure (KPa) Single/Dual	Tube	Static Radius Under Load (mm)	Min. Dual Tire Centreline Space (mm)
		Single	Dual					Section Width	Overall Diameter	Single	Dual				
295/80R22.5★	16	152	148	M	16.0	9.00	8.25	298	1044	3550	3150	850	TL	487	335
315/80R22.5★	18	154	151	M	16.0	9.00	9.75	312	1076	3750	3450	830	TL	500	351
315/80R22.5	20	157	154	L	16.0	9.00	9.75	312	1076	4125	3750	900	TL	500	351
12R22.5★	16	150	147	L	16.0	9.00	8.25	300	1085	3350	3075	830	TL	504	342
12R22.5	18	152	149	K	16.0	9.00	8.25	300	1085	3550	3250	930	TL	504	342

★ EU Availability

EU Label Information

- Good Wet Grip performance
- Superb Rolling Resistance performance for steer product application



295/80R22.5

Proven Performances

	Application	Test Date	Driven Mileage	Tread Wear (mm)	Average Wear (Km/mm)
1	Weihai Area On the road and urban / rural roads	2012/7	69,000	~6	11,256
2	Shanghai Area Highway	2012/10	17,000	~0.8	21,691
3	Wuhan-Shenyang The long-distance Highway	2013/5	68,914	~3.3	20,373

* Uniform Tread wear

* Good wear shoulder abrasion resistance



1



2



3